

- The bazaar street is a intentional design attempt, during nayaka period.
- It plays important role in the ritual topography of Kumbakonam
- The street exhibits a complete public edge with domain of men (commercial) and domain of god (temples and shrines) coexisting without any perceptible difference.



Issues:

A street which was conceived as a bazaar street historically (from Nayaka period) as a conscious design intervention is slowly losing it character.

In terms of –

- Public interface of buildings from windows and balcony's to face less facades.
- From outward looking to more inward looking-form
- Mixed land use to fully commercial land use

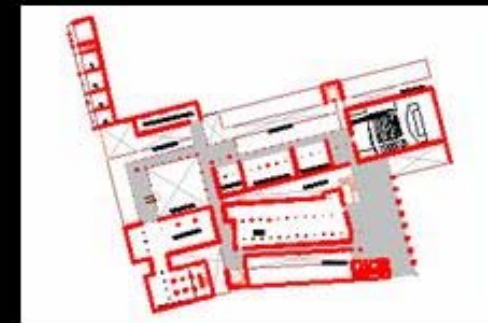
The stretch between chakrapani temple and chakra padithore show a different character which needs to be strengthened.



OVERALL PLAN



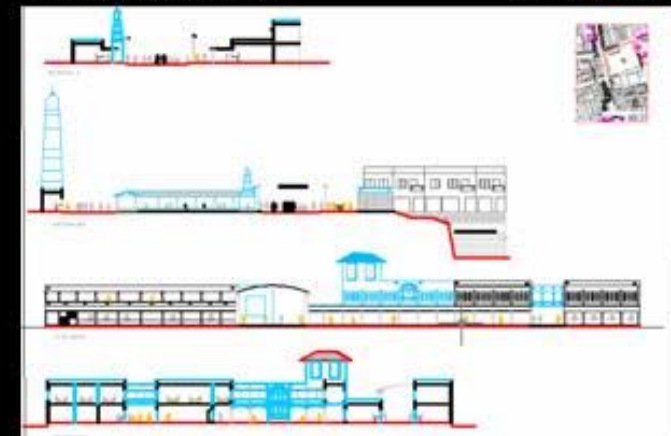
DETAIL PLAN



FIRST FLOOR PLAN OF THE NEW MARKET



PLAN DEMONSTRATING PUBLICRELM



SECTIONS

Street is unable take up the traffic pressures imposed on to it due to its small width & current land use pattern which attracts more trucks & goods vehicles and leads to more and more congestion.

Opportunities:

- A public edge
- It is one of the ritual routes .
- Shrines act as land mark elements and guiding points along the street.



Strategies:

- To strengthen the axis by redefining the street edge
- To redefine the built edge when it is abutting the open behind according to its potentials and need.
- To strengthen the major road intersections to the bazaar street.
- To redefine the edge where the road meets the water.
- To relocate the wholesale market.

REDEFINING THE HISTORICAL CORRIDOR-THE BAZAAR STREET

K U M B A K O N A M —THE CAUVERY DELTA STUDIO 2



ASHA N
BATCH 2007, SEMISTER 2
M.ARCH, R.V.S.A., BANGALORE